

# IN THE DRINK



Magazine of Grimsby and NE Lincolnshire CAMRA

Winter 2022/23

## Town Pub of the Year - Number 2



## Country Pub of the Year - Clickem inn





HAND CRAFTED X ENGLISH ALES

Welbeck Abbey  
Brewery

Buy all our ales online at  
'Best of British Beer'  
for nation-wide delivery  
[WWW.BESTOFBRITISHBEER.CO.UK](http://WWW.BESTOFBRITISHBEER.CO.UK)



Shop direct for free local delivery  
[WWW.WELBECKABBEYBREWERY.CO.UK](http://WWW.WELBECKABBEYBREWERY.CO.UK)

# Editorial



Hi, Happy New Year and welcome to the latest edition of In The Drink magazine. I would like to thank everyone who supported our trip to Batemans Brewery and thank you to the Brewery and organisers for a fantastic evening out.

I would also like to thank everyone for contributing to the magazine and a special thank you to everyone who helps distribute the

magazine to our local pubs.

As always if there is anything you would like to see in the magazine please email me or speak to me at meetings.

Many Thanks and have a great 2023.

**Brian Calladine**

*Editor*

# Chair Report



Another year passes by, and in the 10 months since being in the position, I believe that both as a Committee and the Branch itself we have moved forward. Positive steps have been taken in organised trips to Barrow Hill, Brigg, Gainsborough, Newark and York, not

forgetting the Christmas Trip to Batemans Brewery.

Our whatpub transformation has been another huge step forward (thanks Bri & Katie), our ITD magazine has returned, hence why you are reading this!, the website continues to be a prime source of information to all with updates via email are regularly sent to over 240 members, attendance at meetings remain higher than before and lastly there is the strong possibility of our own Beer Festival returning in June.

There is however still much work to do to get the branch where we would like it to be, we cannot do this without a strong Committee and member engagement, with in mind there are still positions vacant and it would be nice if we can get additional help coming forward from our AGM in March.

Until then here's to a happy new year to you and your families....

**Kevin**

## Branch Contacts

**Chair**

Kevin Donovan

**Branch Secretary**

Kevin Donovan

**Membership Secretary**

Martin Clausen

**Treasurer**

Andy Hamilton

**Vice Chair**

Mark Long

**Co opted Branch**

**Member to the Committee**

John Edwards

**Magazine Editor**

Brian Calladine

grimsbycamramagazine@gmail.com

**Webmaster**

Kevin Donovan

kevin.donovan@hotmail.co.uk

**Pub Preservation Officer**

Graham Larn

**Social Secretary**

John Edwards

**Beer Festival Organiser**

Kevin Donovan

**Apple (Cider Rep)**

Ron Dawson

**Social Media**

Kevin Donovan

**Data Base (WhatPub)**

Brian Calladine and Katie Marks

**TRADING STANDARDS**

Municipal Offices.

Town Hall Square, Grimsby N.E. Lincolnshire.  
DN31 1HU.

Tel: 01472 - 326299. (option 3).

Email: trading\_standards@nelincs.gov.uk

**DESIGN & ADVERTISING BY**

**Paper Red Media**

Neil Richards MBE - 01536 358670

n.richards@btinternet.com

Matt Richards

paperredmedia@outlook.com



# A Beer A Day

**(may keep the doctor away!)**

Well at least that is what some scientists are saying. A study carried out in 2022, revealed that men who consumed a bottle of beer with their evening meal, (or tea, as I prefer to call it), have healthier guts, and a range of good bacteria in their systems, which may help against some diseases, heart problems and diabetes being just two of them.



*Malt grains.*



*Hop flowers.*

However, that doesn't mean you can down six pints a day and expect to be like Superman. On the positive side, a beer or two a day can strengthen bones in men and older women, has less calories than wine and some lagers, and has been shown to help people with some heart problems, it could lower the risk of heart attacks, strokes, and angina in folk who enjoy a drop, against non drinkers. Apparently it's the hops in ale that is the

powerhouse, but malt plays its part also. Dark beers such as mild, porter and stout, contain antioxidants according to the boffins, which help fight off free radicals.

Be aware however that consuming vast amounts of alcohol can have a detrimental effect on your health, it can cause some cancers and cirrhosis of the liver.

So go steady, enjoy a nice dark, or hoppy real ale, in one or more of our local hosteleries, such as The Rutland Arms, Number 2 Refreshment Room, Click'em Inn, or visit CAMRA Whatpub for further suggestions.

Do you agree with the scientific findings, have they given you food for thought? Then please let us know via our contact address.

[grimsbycamramagazine@gmail.com](mailto:grimsbycamramagazine@gmail.com)

If you are worried about your drinking habits, then visit: [alcoholchange.org.uk](http://alcoholchange.org.uk)

Good Health to all our readers.

**Graham Larn**

## Diary Dates

### BRANCH LOCAL OUTINGS:

Visits to local pubs will be arranged quarterly finishing with a presentation to the Seasonal pubs of the year:

Spring - details tba

Summer - details tba

Autumn - details tba

Winter - details tba

### BRANCH MONTHLY MEETINGS:

**Mon 6th February 2023**

Yarborough Hotel (back room) 20:00. Food will be laid on and a possible meet the brewer too.

**Mon 6th March**

AGM, Spiders Web (Main function room) 8pm



Grimsby and North East  
Lincolnshire CAMRA



@grimsbycamra



# Country Pub of the Year

## FIRST PLACE

### **Click'em Inn**

*Swinhope, Lincolnshire.*

Originally called the Talbot Inn around 1820, possibly named after, or owned by The Talbot Family, who were thought to be local land owners, title later changed to Click'em Inn, said to be derived by shepherds counting sheep in an adjoining field using a device that clicked as the animals passed through the gate.

Winner of many CAMRA awards over the decades, it has been run by the same family for many years.



## SECOND PLACE

### **Crown & Anchor**

*Tetney Lock, Lincolnshire.*

Once owned by Hewitt Brothers Ltd, the Grimsby Brewers, as indeed did many of the neighbouring properties. The pub has past links with smuggling, and is allegedly haunted by a young woman, who no doubt is in high spirits. Often featured in Camra's Good Beer Guide.



## THIRD PLACE

### **Station Inn**

*Habrough, Lincolnshire.*

Also an ex Hewitt's pub, formerly The Station Hotel. Built in 1848 to serve the passengers from the Railway Station directly across the road. Now a "Freehouse", the current owners are continuing to provide comfort and joy to the local community and beyond.



### **Congratulations to all the winners.**

Why not pay them a visit sometime, and see why they are the cream of the crop, and enjoy a fab pint in their company. Cheers and Beers!

**Graham Larn**

# Local Real Ale Pub Crawl

Cask Beer is doing fine at the moment in the majority of pubs in Grimsby and North East Lincolnshire region. However there are inevitably some outlets that no longer sell Real Ale, for whatever reason! Here is a current list of known stockists, which we will update occasionally.

Let's start with the bad news. Freeman Street....

Sadly not a single pub has any real beer on sale. Wellington Arms, who's claim to fame is that Grimsby Town F.C. was formed in 1878, following a

meeting held on the premises, currently closed and has been since 2019. Wine pipe, Angel, Corporation Arms, Cottees, Freemans Arms, Smokers Arms & White Bear, all of these pubs sold Real Ale a couple of decades ago, The former Darley's owned White Bear is currently closed and in a derelict state. Moving on to Immingham Town.

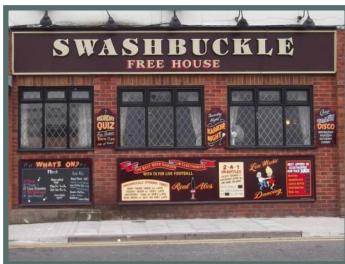
Sadly this is now a cask beer desert too... And now for the good news. The following have at least one Real Ale available and probably more. (not in any order of preference).

## CLEETHORPES

The Number 2, Nottingham, Tale of Two, Kings Royal, Signal Box, Wellow, Trawlerman, Swashbuckle, Number One, Willy's, Kingsway Club, Brewers Fayre, Punchbowl, Studio, Countryman, Market Tavern, Grosvenor, Message in a bottle, Crows Nest, Pear Tree, and Collesium Picture House.



*Tale of Two, Cleethorpes*



*Swashbuckle, Cleethorpes*



*Message in a Bottle, Cleethorpes*

## GRIMSBY

Rutland Arms, Barge, Rose & Crown, Walter's, Jubilee, Seven Seas, Docks Beers, Parity, Hope & Anchor, Tivoli Tavern, County, Wheatsheaf, Yarborough Hotel, Beachwood Farm, Spider's Web, Millfields and the Trawl.



*Barge, Grimsby*



*Tivoli Tavern, Grimsby*



*Spiders Web, Grimsby*

## THE OUTER LIMITS

### **NEW WALTHAM**

The Farmhouse

### **BARNOLBY**

The Ship Inn

### **BINBROOK**

The Plough

### **TETNEY LOCK**

Crown & Anchor

### **STALLINGBOROUGH**

Green Man

Grange

### **WALTHAM**

Kings Head

Tilted Barrel

### **TETNEY**

The Plough

### **CAISTOR**

White Hart

### **HEALING**

Pig & Whistle (Healing Manor)

### **ROTHWELL**

Blacksmiths Arms

### **LUDBOROUGH**

Livesey Arms

### **MARSHCHAPEL**

White Horse

### **KEELBY**

Nags Head

Kings Head

### **SWINHOPE**

Click'em Inn

### **KIRMINGTON**

Marrowbone & Cleaver

### **ULCEBY**

Yarborough Arms

Fox Inn

### **HABROUGH**

Station Inn

### **SWALLOW**

Swallow Inn

### **EAST HOLTON**

Black Bull

### **NETTLETON**

Salutation



*Green Man, Stallingborough*



*Livesey Arms, Ludborough*



*Yarborough Arms, Ulceby*

This list was correct at time of compilation.  
There are some pubs not listed here at the moment,  
as they need to be surveyed and updated, the

results will be published in a later edition of "In The Drink"

**Graham Larn**



# Local News

## Hound-Up



[sniffing out the stories]

### GRIMSBY

A couple of new kids on the block. Starting with, "**Bartender. LGBTQ+**". Situated in the historic former Chamber's Coffee House on The Old Market Place, specialising in tribute and cabaret acts. Keen to try Real Ale.



Just around the corner in Osborne Street is "**Racks, Pool & Sports bar**". The name says it all really, large open plan, with a sporting theme. Also considering serving Cask Beer, when trade gets firmly established.



**Tap & Spile.** Planning application lodged to convert the whole of the historic Haven Mill complex into luxury flats, with the possibility of retaining the pub part as a cocktail bar/ restaurant.

Mmm why not just retain the Tap & Spile as a high quality Real Ale establishment!

**Trawl.** Recently refurbished, three Greene King Beers available.



**Jubilee.** Two regular and rotating guest ales on sale.

### CLEETHORPES

**Kingsway club.** Newly opened ground floor bar which is open to the public. Two handpulled beers on sale.

**Market Tavern.** Another refurbishment with two guest ales.

**Signal Box.** Whose claim to fame is that the pub is recognised as being "The Smallest Pub on the Planet" it measures 8ftx8ft. A range of cask beer's, also, music and ale festivals are hosted regularly. Check for opening times before visiting.



## NORTH THORESBY. Lincs.

**New Inn.** Four beers on sale including Theakston Best. Meals available. Handy watering hole when visiting the Lincolnshire Wolds Railway, a heritage steam preservation line which runs close by.



## LUDBOROUGH. Lincs.

**Livesey Arms.** Just a couple of miles away is another hidden gem, this pub/restaurant was established in 1792 probably as a Coaching Inn. Three cask ales on sale, nice to see Draught Bass making an appearance.

## STALLINGBOROUGH

**Green Man.** Long established pub and eatery, with three ales to choose from.

## GREAT LIMBER

**The New Inn.** Reopened in August 2022 after being closed for around 18 months. Established in 1840, and is grade II listed, extensive restaurant menu, hotel accommodation, and two guest beers to enjoy, usually from localised brewers.



Graham Larn

2012 2022  
**Pheasantry**  
BREWERY

**BB**  
BEST BITTER  
100.000

**Dancing Dragonfly**  
GOLDEN ALE  
100.000

**TANK ALE**  
Supporting the Lincoln Tank Museum  
100.000

**AURORA**  
100.000

**PILGRIM**  
Brewed in North Nottinghamshire  
the heartlands of the Pilgrimage movement  
100.000

**Spring Ale**  
100.000

**Harvest Ale**  
100.000

**QUADRICENTENNIAL 1620-2020**  
The Pheasantry Brewery  
**PILGRIM**  
Brewed in North Nottinghamshire  
the heartlands of the Pilgrimage movement  
USA 100.000 THE MAYFLOWER 3.9% ABV GOLDEN ALE

High Brecks Farm, Lincoln Rd, East Markham, Newark, Notts, NG22 0SN  
pheasantrybrewery.co.uk • Tel 01777 872728

# Poets Cornered

---

## "Memory Lane"

By Graham Albeck Esquire



*Just off Freeman Street was 'The Hitching Rail'.  
Where you might find a pint of 'Hewitt's Ale'.*

*A place that sold beer differently from the rest.  
Is on an estate and is called 'The Crows Nest'.*

*Over in Cleethorpes was The 'Vic' and The 'Sub'.  
Then walk down the hill to 'The Sunnyside Club'.*

*Stroll along the seafront and pop into 'The Lifeboat'.  
But on the way home you will need to wear a hat and a coat!*

*A lot of good drinking places have now sadly gone.  
So I'm pleased that we've still got 'Under The Clock' and 'The Number One'.*

---

## Beaver Patrol

---

Now we've all heard about the white horse that walked into a bar haven't we?

Well how about the one where a beaver walks into a pub. The Yew Tree hostelry in Norton Canes, Staffordshire, was host to an unusual caller, namely a beaver, the semiaquatic rodent, marched its way through the bar and into the beer garden, settling down for a wash in the smoking shelter. He was later rescued by members of a local wildlife sanctuary. Customers joked that he may have been searching for some Beavertown Brewery Beers.



"Anyroad up". Back to the White Horse pun! It goes something like this.

"A white horse goes into a pub, the bar worker says, "hello we sell a whisky named after you" the horse replies, "what Johnnie Walker".... or is the punchline, 'Eric', I can never remember.

I've heard of a horse going into a pub in Grimsby before, but never a talking horse, hang on, apart from Mister Ed, that 'hilarious' sitcom from the 1960s.... Mmm time for a pint and a lie down methinks!

Graham Larn



# Someone Sitting There Mate!

Ever been in a pub sat alone enjoying a pint? Yes of course you have, haven't we all!

But what to do when you need the lav and there is still a fair amount of ale left in your glass, there's nobody nearby to nurse it for you, not to mention while you nip off to the w.c. your seat may be occupied by person unknown on your return, to make matters worse, horror of horrors, your remaining glass of ale has been taken away by bar staff, ("sorry mate thought you'd gone"). All sounds very familiar doesn't it!



*Technique to protect your pint and seating arrangement.*

How can we help ourselves to ensure this doesn't happen again?

Well in the old day's, one way to protect your pint was to cover it with a beer mat, the same method was used to secure your seat, another idea was to put an ashtray on the chair, although this didn't go down too well with the landlord, impossible to do nowadays, unless you are in an outdoor reserved area.

The alternative of course is to accompany your pint to the bog and hope for the best, a bit difficult to drag your chair along for company though don't you agree!

Other than that, get someone on an adjacent table to cry out..... "SOMEONE SITTING THERE MATE" whenever an individual approaches your vacated seat and table.

**Graham Larn**

## WILLYS

pub and brewery



**Willys the Original Brew Pub on the sea front in Cleethorpes**

**Always serving Willys Original Bitter plus two Guest Beers and three Real Ciders**

**A great home cooked menu served lunchtimes and Monday to Thursday teatimes**

**This is an award winning venue serving great beer, good food with a view over the sea to please everyone**

Find us on Facebook 

Tel: 01472 602145  
17 Highcliff Road, Cleethorpes. DN35 8RQ

# Sparkling Champions

---

The prestigious "Pub(s) of the Year Awards" Were presented during the summer and autumn of 2022. These are the top places.

## THE TOWN PUB & OVERALL WINNER

### The Number 2 Refreshment Rooms



Also known as "Under the Clock". Situated on Cleethorpes Railway Station concourse. This long established, multi award winning hostelry, has been run by the same management team of Paul Rowntree & Darren Sparkes since 1991. With Paul being one of the longest serving pub Landlord's in the region, first venturing out in 1987.

## SECOND PLACE



### The Rutland Arms Freehouse, Rutland Street Grimsby

Opened in 1988 by Old Mill Brewery, now a thriving free of tie pub, recently brought back to life by the present owners, Andrew & Samantha Franks.

## THIRD PLACE



### Willy's Pub and Brewery, Highcliffe Road, Cleethorpes

Well known establishment on Cleethorpes seafront. Run by Bill Parkinson, another long serving Landlord.

Graham Larn

## The Rutland Arms

*Home to some great local ales in Grimsby*

The image shows a bar with several beer taps and bottles. In the foreground, there is a sign for 'OLD MILL BREWERY, SNAITH' featuring a cartoon character of a man in a white apron holding a glass of beer. The sign also includes the text 'est. 1953'. Below the bar, there is a black banner with the text 'Real Premium Yorkshire Ales'.

## Real Premium Yorkshire Ales

Old Mill Brewery • Snaith • Yorkshire • DN14 9HU • 01405 861813  
sales@oldmillbrewery.co.uk www.oldmillbrewery.co.uk



# Love beer?

Discover  
why we joined.  
[camra.org.uk/  
10reasons](http://camra.org.uk/10reasons)



# Love pubs?

From  
as little as  
**£28.50\***  
a year. That's less  
than a pint a  
month!

Includes  
**£30<sup>+</sup>**  
Real Ale  
Cider & Perry  
Vouchers

## CAMRA Membership is for you!

We're leading the fight to keep pubs alive and thriving  
in every community, serving quality ales and ciders.

We offer you fantastic benefits and everything you need  
to find the perfect pint and pub – anytime, anywhere.

Find out more  
[camra.org.uk/joinup](http://camra.org.uk/joinup)

\*Price for paying by Direct Debit and correct at 1 July 2021. Concessionary rates available. Please visit [camra.org.uk/membership-rates](http://camra.org.uk/membership-rates)  
†Joint members receive £40 worth of vouchers.



Campaign  
for  
Real Ale

CLICK'EM  
INN  
TRADITIONAL REAL ALE PUB



**Tel: 01472 398253**

**Swinhope, Nr Binbrook,  
Market Rasen, LN8 6BS**

*The award winning traditional real ale pub situated in the heart of the Lincolnshire Wolds*

*We stock premium draught lagers, ciders, and a large selection of wines and spirits,  
plus a large selection of premium gins.*

*Evening dining six days a week (closed Monday), plus lunchtimes on certain days of the week.*

*We have a large free carpark, outside seating and tables, free WiFi internet throughout,  
as well as a pool table, dart board and digital jukebox for your enjoyment.*

*Regular local pool and dart leagues on their respective nights.*



**PAPER RED MEDIA**

## Would you like to advertise in this magazine?

We provide advertising & design for a variety  
of CAMRA branch magazines around the Country

Contact us for details on our competitive rates  
or if you are interested in us designing and  
publishing a magazine for you

**Paper Red Media**

**Tel: 01536 358670**

**Email/s: [papperredmedia@outlook.com](mailto:papperredmedia@outlook.com)  
[n.richards@btinternet.com](mailto:n.richards@btinternet.com)**





AT DOCKS BEERS WE BREW CRAFT BEER WITH BLOOD, SWEAT AND TEARS IN A DECONSECRATED CHURCH NEAR GRIMSBY'S FAMOUS DOCKS.

HAVE A DRINK IN OUR VIBRANT TAPROOM WHICH OVERLOOKS THE BREWERY. SAMPLE OUR BEERS ALONG WITH A RANGE OF GUEST BEERS. CASK ALES, SPIRITS AND CIDERS ARE ALSO AVAILABLE.

WE ALSO SELL BEER AND DOCKS BEERS MERCHANDISE TO TAKE AWAY.

## THE CRAFT BEER ADVENTURE STARTS HERE.

CLOSED MONDAY AND TUESDAY

WEDNESDAY: 12PM-9PM

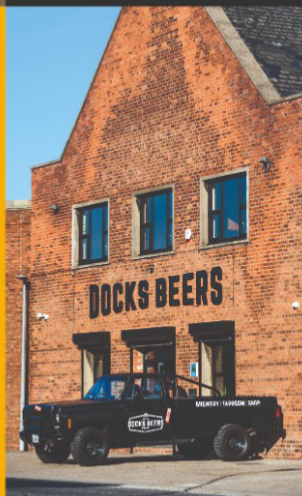
THURSDAY: 12PM-9PM

FRIDAY: 12PM-11PM

SATURDAY: 12PM-11PM

SUNDAY: 12PM-6PM

**TOURS AVAILABLE. ENQUIRE ONLINE.**



[DOCKSBEERS.COM](https://docksbeers.com) | [TAPROOM@DOCKSBEERS.COM](mailto:TAPROOM@DOCKSBEERS.COM) | 01472 289795

THE CHURCH, KING EDWARD ST, GRIMSBY, DN31 3JD



@DOCKSBEERS